

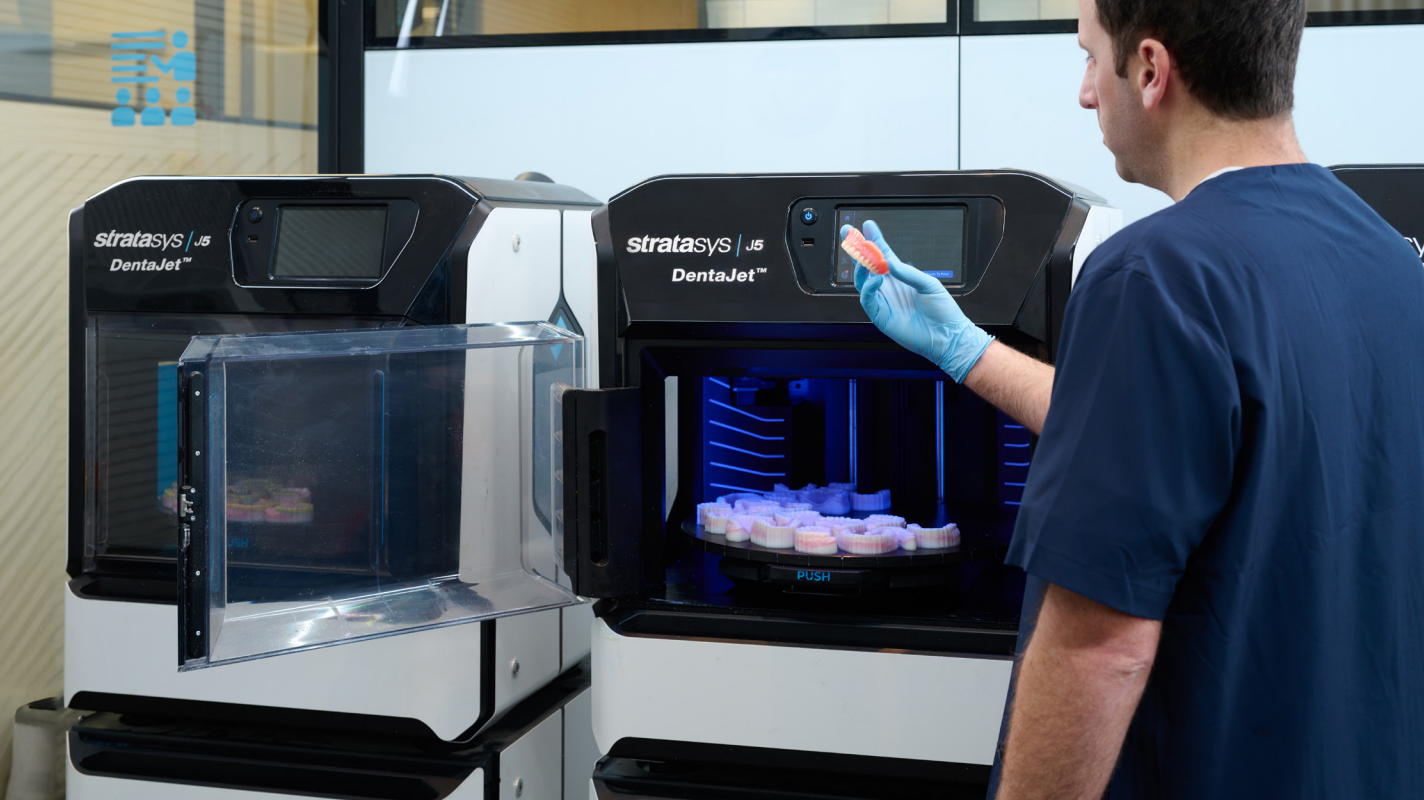
TrueDent[®] Digital Dentures

True aesthetics made possible

Streamline production, reduce labor, and deliver advanced TrueVoxel[™] aesthetics – all in one seamless digital workflow



[Learn More](#)



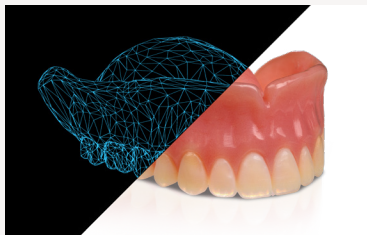
The TrueDent[®] Solution

TrueDent dentures are monolithic, full-color, 3D printed dentures produced with TrueDent FDA-cleared (Class II) and CE-marked (Class IIa) resin on the J5 DentaJet[®] 3D printer.

Traditional denture fabrication and other multi-material digital workflows are time-consuming, labor-intensive, and prone to inconsistencies.

TrueDent changes that - with scalable, low-touch production of highly aesthetic, accurate, repeatable dental appliances on a single mixed-part, high-capacity tray.

The TrueDent Difference



Monolithic Full-Color

Single, continuous, multi-shade print eliminates assembly



Advanced TrueVoxel[™] Aesthetics

Lifelike incisal translucency, internal structures and cervical staining - automated



True-to-Design Fidelity

Consistent, accurate print ensures optimal fit, form and function



Exact Reproducibility

Produce perfect copies and reprints with the click of a button





Focus Applications

Monolithic Full-Color Dentures

Deliver lifelike aesthetics in a single, seamless print with a robust library of digital shades and advanced TrueVoxel aesthetics, all generated from the same 5 base color resins. Offer patients a natural looking, highly personalized result.



Color Try-Ins

Produce full-color, patient-ready try-in appliances that accurately represent the final denture in shade, fit, and form. Reduce remakes and chair time by giving patients and clinicians a true preview before final fabrication. In some cases, the try-in is so good that it becomes the final.



Removable Partial Dentures (RPDs)

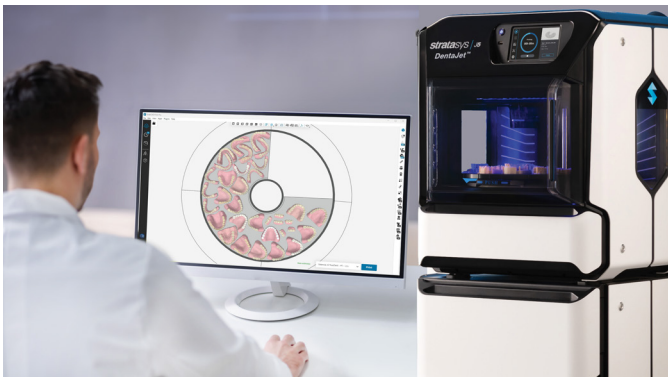
Monolithic base and teeth construction with true-to-design print accuracy makes TrueDent partials fast to assemble with virtually any metal framework from any manufacturer. An expansive range of TrueVoxel™ digital shades and advanced aesthetics make it easy to match existing dentition for a natural, seamless result.





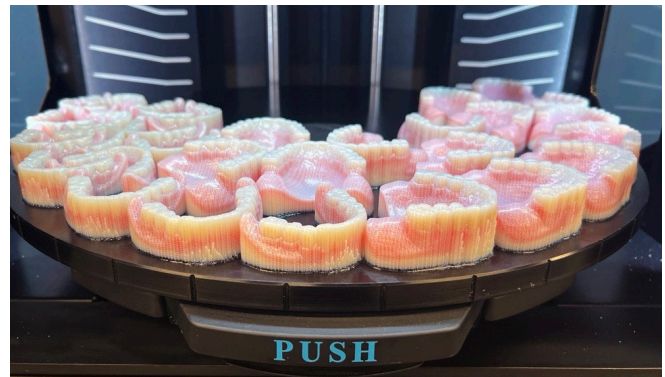
TrueDent[®] Workflow – Production In Half the Time

Streamlined, scalable digital denture production with minimal manual intervention. This simplified, automated digital workflow eliminates time-consuming manual steps and allows you to produce large batches of mixed, multi-color dental appliances in a fraction of the time.



1-Click Nesting

GrabCAD Print software automatically generates all supports and arranges up to 34 dentures per build to optimize tray capacity, material usage, and print time.



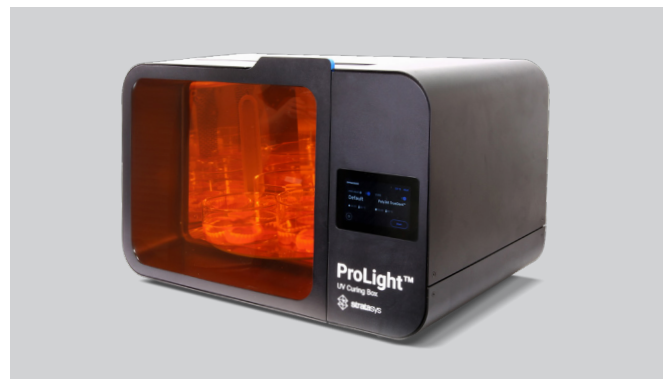
Unattended Print & Cure

Simultaneous printing and curing of polychromatic, monolithic parts simplifies the production process and increases efficiency, with no manual intervention needed.



Automated Wash

Water-based, large batch support removal without hazardous IPA means faster, safer production of finished parts.



Batch Thermal Treatment

Allows for processing large quantities of dentures simultaneously to set final properties.



What TrueDent Means For Your Dental Lab

Production Efficiency & Scalability

- 70% less labor time
- 5X capacity per print
- No manual assembly or risk of debonding
- No need to stock additional resins or teeth libraries
- Safer, faster post-processing & delivery



[We] found that, between fabrication and post-insertion adjustments, digital fabrication saves us an average of 3.89 visits per denture (not including immediates) compared to conventional methods. When we extrapolate that data to our entire organization, that's a potential savings of about 147,000 hours of chair time annually...We've done over 2,700 arches now, and the consistency is remarkable."

Dr. Todd Davis
Heartland Dental





What TrueDent Means For Your Customers

Increased Dentist & Patient Satisfaction

- 2 appointment workflow
- Less chair time
- Excellent fit, form & function
- Exact copies & replacements
- Affordable for the patient, profitable for the dentist



This solution is better for everybody in terms of time and cost. It takes less time to create the outcome we are looking for due to the streamlined digital workflow on the lab side....we are also saving on chair time thanks to better accuracy which results in better fit and fewer (if any!) adjustment appointments needed."

Dr. Douglas Benting
Renew Dental



These absolutely fit wonderfully. I can eat on both sides of my mouth. The feel in my mouth is incredible. It's been nothing but a positive experience for me."

Candice Baier-Gregory
TrueDent patient



[Read the Renew Dental Case Study](#)





Indications for Use

TrueDent is a light curable resin intended for the fabrication of dental appliances, including removable full and partial dentures, denture bases, denture teeth, bridges, crowns, inlays, onlays, and veneers. The material serves as an alternative to traditional heat curable and auto polymerizing resins and is intended exclusively for professional dental work. All TrueDent devices are intended for long term intraoral use (>30 days). TrueDent is intended for adult patients with a total or partial loss of teeth within one or both jaws.

J5 DentaJet / TrueDent Specifications

Materials	<input checked="" type="checkbox"/> TrueDent® Clear	OBJ-09164	Cartridge Size	1.1 kg
	<input type="checkbox"/> TrueDent® Cyan	OBJ-09165	Shade Presets	All teeth and base shades are created digitally using the 5 base color resins listed. The presets are continually expanding via regular software updates.
	<input type="checkbox"/> TrueDent® Magenta	OBJ-09166		
	<input checked="" type="checkbox"/> TrueDent® White	OBJ-09168	Batch Size	Full tray ~34 dentures (case dependent)
	<input type="checkbox"/> TrueDent® Yellow	OBJ-09169		
<input type="checkbox"/> TrueDent® Support	OBJ-09167 (not a medical device)			

Material Properties

Property	Requirement	TrueDent Value	Compliance Standard
Ultimate Flexural Strength	≥65 MPa / ≥50 MPa	≥85 / ≥94 MPa	ISO 20795-1 ISO 10477
Flexural Modulus	≥2000 MPa	≥2300 MPa	ISO 20795-1
Water Sorption	≤32 / ≤40 µg/mm ³	≤32 / ≤28 µg/mm ³	ISO 20795-1 ISO 10477
Solubility	≤1.1 µg/mm ³	≥85 ≤1.1 µg/mm ³	ISO 20795-1

System Requirements

Software

GrabCAD Print (included, compatible with all dental CAD platforms)

Post-Processing Equipment

- Water-based automated washing system* or water jet * Soft Relax HTM by Effegi Brega (USA OBJ-21000) (validated recommendation)
- Thermal treatment chamber: TrueDent Cure (OBJ-09940) or ProLight chamber (OBJ-09960, OBJ-09970)
- Standard dental lab finishing/polishing tools

Facility Requirements

- Standard dental laboratory environment
- Room temperature: 18°C-25°C (64.5°F-77°F)
- Relative humidity: 30%-70% non-condensing
- Room ventilation system should change the air at least 4 times per hour
- 2 electrical outlets behind the printer & one outlet near the air extractor unit
- Uninterrupted Power Supply (UPS) Requirements

- **Output Voltage** (single-phase; 50/60 Hz): **100-240 VAC**
- **Power:** **1000 W**
- **Power Factor** (Defined as the input-to-output ration of the UPS): **0.9**

- **Bridging Time:** **15 minutes**
- **Topology:** **Double conversion online**

Installation, training and technical support included.



Getting Started with TrueDent

Transform Your Denture Production Today

Ready to streamline your workflow and deliver superior aesthetics and fit? Our team is here to help you implement TrueDent® in your lab.

Contact Us:

☎ 1-800-801-6491

✉ dental@stratasys.com

🌐 stratasys.com/dental

🌐 [linkedin.com/showcase/stratasysdental](https://www.linkedin.com/showcase/stratasysdental)



[Get the Complete Guide to TrueDent](#)



[Request a TrueDent Sample](#)



[Talk to a Dental Expert](#)



This efficiency is proving invaluable to our dental team”

Justan Koch
Artisan Dental Laboratory



stratasys.com

ISO 9001
ISO 13485

Stratasys Headquarters
5995 Opus Parkway,
Minnetonka, MN 55343
+1 800 801 6491 (US Toll Free)
+1 952 937-3000 (Intl)
+1 952 937-0070 (Fax)

1 Holtzman St.
Science Park
Rehovot, 7670401
Israel
+972 74 745 4000
+972 74 745 5000 (Fax)

BROCHURE
DENTAL

© 2026 Stratasys Ltd. All rights reserved. Stratasys, TrueDent, J5 DentaJet, GrabCAD Print, are trademarks or registered trademarks of Stratasys Ltd. and/or its subsidiaries or affiliates and may be registered in certain jurisdictions. All other trademarks belong to their respective owners. MKT-000001EN Rev. D.BR_PJ_TrueDent_0326a_RevD