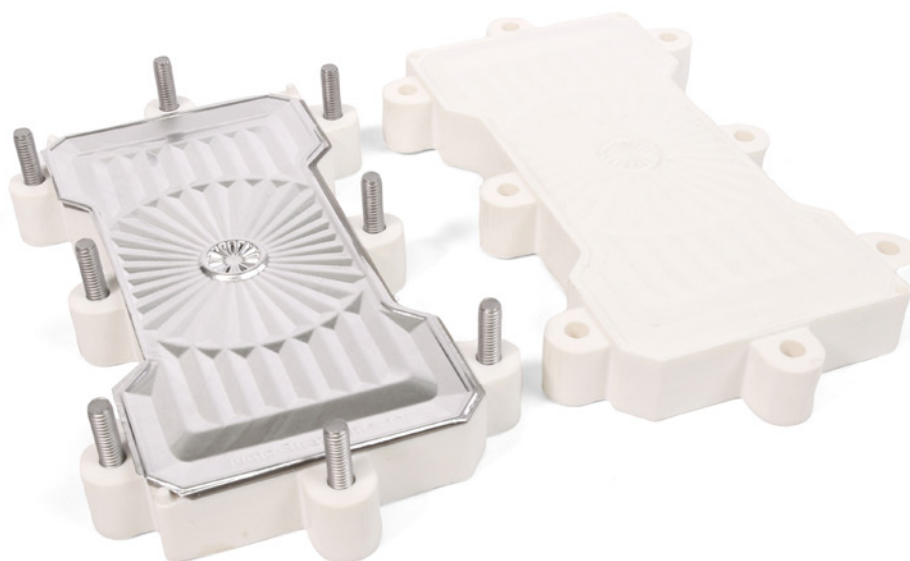


ToughONE™

ToughONE™ expands the capabilities of PolyJet™ technology, bridging the gap between visual appeal and functional performance. Now, you can seamlessly transition from form-fit visual prototypes to robust functional prototypes, making it the ideal choice for industries demanding both strength and precision.

ToughONE can be used with the following printers:

System Compatibility		
System	ToughONE White	ToughONE WhiteS
J826™ Prime	●	○
J850/35™ Prime	●	○
J850 Pro	●	○
J835™	●	○
J850™ Digital Anatomy™	●	○
J55™ Prime	○	●
J5 MediJet®	○	●
J35™ Pro	○	●
J5 Digital Anatomy™	○	●





Configuration: ToughONE™ White Pure (Single Material) for J8 Series™ Printers

Values in parentheses are standard deviations.

Property	Units	Out of Printer	12 hr. Post-Cure @ 45 °C
Tensile Properties: ASTM D638			
Yield Strength	MPa	40 (2)	50 (2)
	psi	5.8 (0.3)	7.3 (0.3)
Elongation at Break	%	55 (4)	53 (5)
Modulus (Elastic)	MPa	2,433 (185)	2,457 (87)
	ksi	353 (27)	356 (13)
Flexural Properties: ASTM D790			
Strength at Break	MPa	59 (4)	82 (5)
	ksi	8.6 (0.6)	11.9 (0.7)
Modulus	MPa	1,713 (106)	2,284 (157)
	ksi	248 (15)	331 (23)
Impact Properties: ASTM D256, ASTM D4812			
Izod, Notched	J/m	47 (4)	47 (4)
	ft•lb/in	0.88 (0.08)	0.88 (0.08)
Izod, Unnotched	J/m	1,160 (150)	1,131 (126)
	ft•lb/in	21.7 (2.8)	21.2 (2.4)
Physical Properties			
HDT @ 0.45 MPa: ASTM D-648-06	°C	49 (2)	61 (2)
	°F	120.2 (35.6)	141.8 (35.6)
Tg: DMA, E''	°C	51	74
	°F	123.8	165.2
Shore Hardness	(Scale D)	81 (1)	82 (1)

System Availability	Layer Thickness Capability	Support Structure	Available Color
J826™ Prime J850/35™ Prime J850 Pro J835™ J850™ Digital Anatomy™	Horizontal build layers down to 14 microns (0.00055 in.), depending on print mode	SUP705 (waterjet removable)	White

Note: Material properties may vary depending on printing parameters and post-processing conditions.



Configuration: ToughONE™ White Reinforced for J8 Series™ Printers

(Digitally Mixed With RGD531 Reinforcer)

Values in parentheses are standard deviations.

Property	Units	Out of Printer	12 hr. Post-Cure @ 45 °C	12 hr. Post-Cure @ 80 °C
Tensile Properties: ASTM D638				
Yield Strength	MPa	51 (1)	58 (2)	62 (1)
	psi	7.4 (0.1)	8.4 (0.3)	9.0 (0.1)
Elongation at Break	%	46 (7)	31 (9)	24 (3)
Modulus (Elastic)	MPa	2,518 (109)	2,661 (86)	2,873 (61)
	ksi	365 (16)	386 (12)	417 (9)
Flexural Properties: ASTM D790				
Strength at Break	MPa	65 (2)	87 (6)	87 (4)
	ksi	9.4 (0.3)	12.6 (0.9)	12.6 (0.6)
Modulus	MPa	1,836 (46)	2,345 (120)	2,295 (93)
	ksi	266 (7)	340 (17)	333 (13)
Impact Properties: ASTM D256, ASTM D4812				
Izod, Notched	J/m	94 (5)	96 (4)	105 (7)
	ft•lb/in	1.76 (0.09)	1.80 (0.08)	1.96 (0.13)
Izod, Unnotched	J/m	1,108 (28)	1,042 (127)	928 (131)
	ft•lb/in	20.7 (0.5)	19.5 (2.4)	17.4 (2.5)
Physical Properties				
HDT @ 0.45 MPa: ASTM D-648-06	°C	53 (1)	65 (1)	79 (1)
	°F	127.4 (33.8)	149.0 (33.8)	174.2 (33.8)
HDT @ 1.82 MPa: ASTM D-648-06	°C	46 (1)	57 (1)	61 (1)
	°F	114.8 (33.8)	134.6 (33.8)	141.8 (33.8)
Tg: DMA, E''	°C	60	74	79
	°F	140.0	165.2	174.2
Shore Hardness	(Scale D)	82 (1)	82 (2)	84 (2)

System Availability	Layer Thickness Capability	Support Structure	Available Color
J826™ Prime J850/35™ Prime J850 Pro J835™ J850™ Digital Anatomy™	Horizontal build layers down to 14 microns (0.00055 in.), depending on print mode	SUP705 (waterjet removable)	White

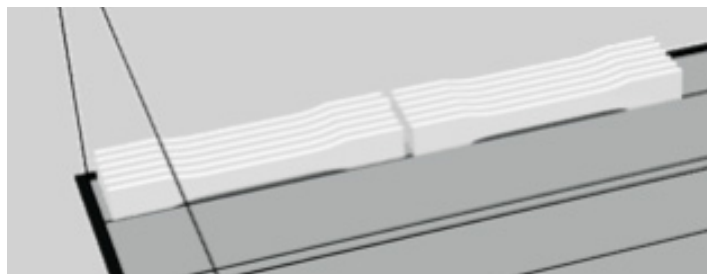
Note: Material properties may vary depending on printing parameters and post-processing conditions.



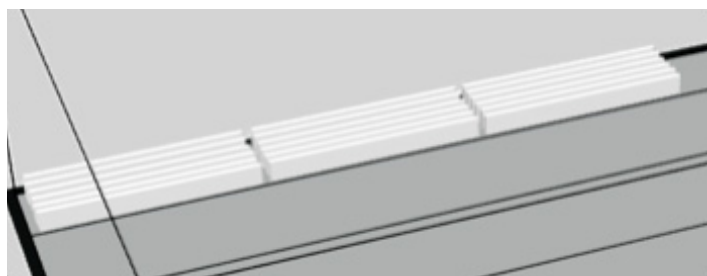
Printing and Measurement Details: ToughONE White for J8 Series Printers

The following procedures were used to obtain the values found in this datasheet.

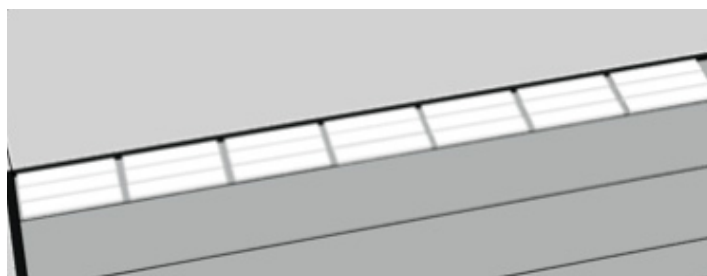
- Post-curing was performed with the [ProLight™ Cure Box](#) at 45/80 °C for 12 hrs using visible blue light (450 nm wavelength).
- Samples were measured within 24 hours of printing or post-curing.
- Support removal was done mechanically, without using waterjet.
- Dogbones and flexural bars were printed glossy in the XZ orientation, in one pass (see illustration below).
- Izod impact bars were printed glossy in XY orientation, in one pass (see illustration below).



Dogbones, glossy XZ



Flexural bars, glossy XZ



Izod impact bars, glossy XY

Note: Material properties may vary depending on printing parameters and post-processing conditions.



Configuration: ToughONE™ WhiteS for J35™ Pro and J5 Series™ Printers

There is no need to post-cure the ToughONE WhiteS material. Values in parentheses are standard deviations.

Property	Units	ToughONE™ WhiteS Pure	ToughONE™ WhiteS Reinforced (With RGD531S)
Tensile Properties: ASTM D638			
Yield Strength	MPa	39 (3)	49 (2)
	psi	5.6 (0.4)	7.1 (0.3)
Elongation at Break	%	40 (10)	38 (5)
Modulus (Elastic)	MPa	2,229 (151)	2,596 (170)
	ksi	323 (22)	376 (25)
Flexural Properties: ASTM D790			
Strength at Break	MPa	57 (7)	67 (4)
	ksi	8.3 (1)	9.7 (0.6)
Modulus	MPa	1,772 (278)	1,864 (142)
	ksi	257 (40)	270 (21)
Impact Properties: ASTM D256, ASTM D4812			
Izod, Notched	J/m	45 (4)	71 (4)
	ft•lb/in	0.84 (0.08)	1.33 (0.08)
Izod, Unnotched	J/m	1,285 (61)	961 (66)
	ft•lb/in	24.0 (1.1)	18.0 (1.2)
Physical Properties			
HDT @ 0.45 MPa: ASTM D-648-06	°C	46 (2)	52 (2)
	°F	114.8 (35.6)	125.6 (35.6)
Tg: DMA, E''	°C	60 (1)	63 (1)
	°F	140.0 (33.8)	145.4 (33.8)
Shore Hardness	(Scale D)	74 (1)	74 (1)

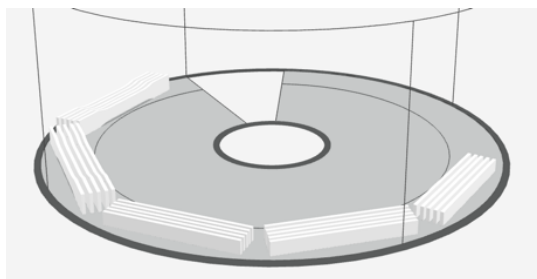
System Availability	Layer Thickness Capability	Support Structure	Available Color
J35™ Pro J55™ Prime J5 MediJet® J5 Digital Anatomy™	Horizontal build layers down to 18.75 microns (0.0007 in.), depending on print mode	SUP710S (waterjet removable)	White

Note: Material properties may vary depending on printing parameters and post-processing conditions.

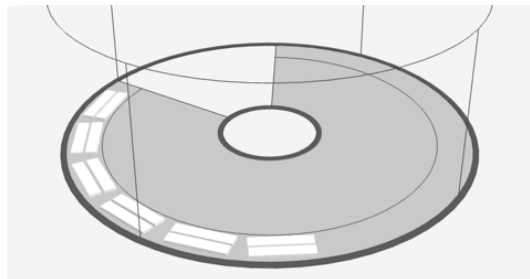
Procedures used to obtain values in the Datasheet

Printing and measurement details

- Dog bones, flexural bars and Izod impact specimens are printed glossy in θ orientation, outer swat
- Samples are measured within 24 hrs after printing



Dog bones and flexural bars, glossy
 θ orientation



Izod impact bars, glossy
 θ orientation

PolyJet™ ToughONE™

Visual Accuracy
Meets Strength.



[stratasys.com](https://www.stratasys.com)

ISO 9001:2015
Certified

Stratasys Headquarters
5995 Opus Parkway,
Minnetonka, MN 55343
+1 800 801 6491 (US Toll Free)
+1 952 937-3000 (Intl)
+1 952 937-0070 (Fax)

1 Holtzman St.
Science Park
Rehovot, 7670401
Israel
+972 74 745 4000
+972 74 745 5000 (Fax)

MATERIAL DATA SHEET ToughONE™

© 2026 Stratasys Ltd. All rights reserved. Stratasys, Stratasys signet J850, SUP705, SUP706B, PolyJet, and ToughONE are trademarks or registered trademarks of Stratasys Ltd. and/or its subsidiaries or affiliates and may be registered in certain jurisdictions. All other trademarks belong to their respective owners. Product specifications subject to change without notice. MDS_PJ_ToughONE_FullData_0226a.